

CERTIFICATE OF LOCATION OF GOVERNMENT CORNER

EAST QUARTER _____ Corner of Section 21, Township 108N, Range 39W

5th Principal Meridian, State of Minnesota, County of MURRAY

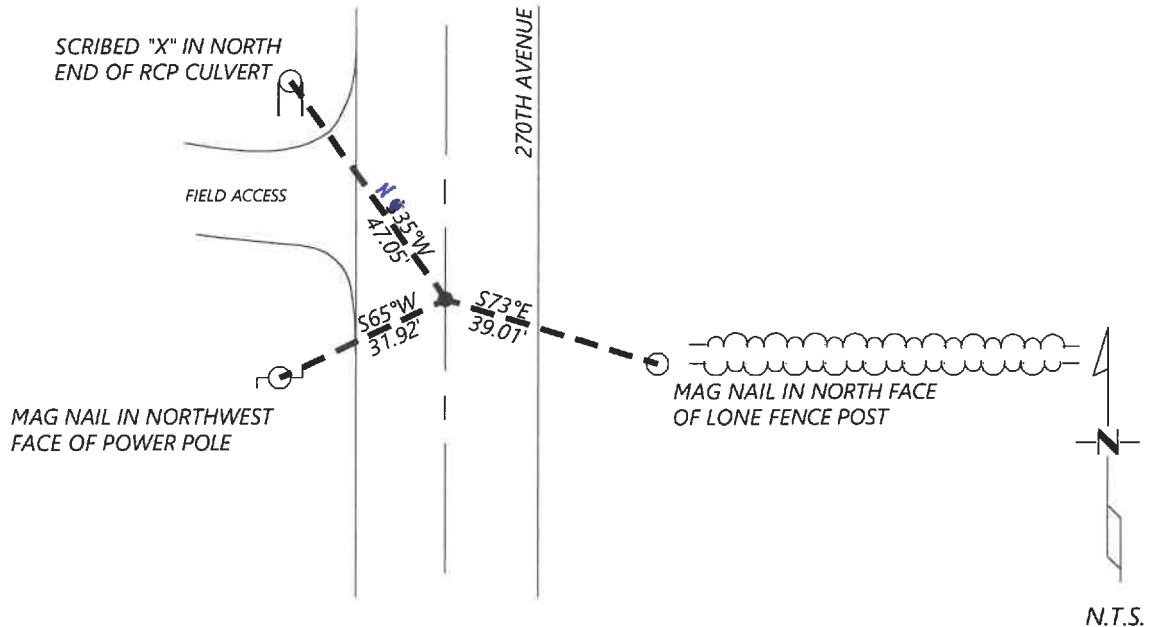
At the corner location shown on the sketch:

On _____ found a _____
DATE

left monument as found lowered monument removed monument (explain)

On 12/15/2020 placed a NO. 4 REBAR WITH CAP LS 45874 DOWN 0.4FT
DATE

SKETCH OF REFERENCE TIES



Statement of evidence for this corner location is on back of this page.

I hereby certify that this document was researched and prepared by me or under my direct supervision and that I am a licensed Land Surveyor under the laws of the State of Minnesota.

Signature [Handwritten Signature]
Date 6/17/2021 License No. 45874

Title:

- Land Surveyor Professional Engineer
 County Surveyor County Engineer

OFFICE OF THE COUNTY RECORDER

County of Murray

I hereby certify that this document was filed in the Co.

Recorder's office at _____ M. on the _____ day of _____ A.D. 20 _____

County Recorder Karen Brown

by 11/11 2 2 2021, Deputy

DOCUMENT NO. _____

Statement of Evidence:

East Quarter Corner of Section 21, Township 108 North, Range 39 West, 5th Principal Meridian, Murray County, Minnesota.

1861 July, GLO Notes: Set post on mound.

Undated, Survey record for Section 21 shows a found government corner. A distance of 2645.6ft is shown to the Northeast section corner and 2658.0ft is shown to the Southeast section corner.

2020 December, Westwood Professional Services excavated a 15x6x3.5ft hole with a backhoe and found no evidence of the monument. I set a $\frac{1}{2}$ " rebar with cap 45874 at the prorated distance to survey record and on the road centerline.

Analysis of the recovered data, field evidence and survey measurements, indicates that the monument found is the correct perpetuation of this corner. For additional information concerning this corner please contact Westwood Professional Services.